

Ammunition Feeding System



Feed chute for 5.56x45, 7.62x51 and 12.7x99 mm



- Flexible feed chute with standard attachment.
- Can be connected to ammo boxes and feed chute adaptors.
- Can easily be adjusted in length.
- The feed chute is made from strong and lightweight plastics.



Feed chute upgrade capabilities

Materials

- ABS
- PC

Adapter

- 3D - printed Nylon (PA12) adapters
- Sheet Metal adapters

Color

- Black
- Sand
- Or as requested



Feed chute adapter for M249, M240 and MG3

- Available in three different angles 0°, 45° and 90°.

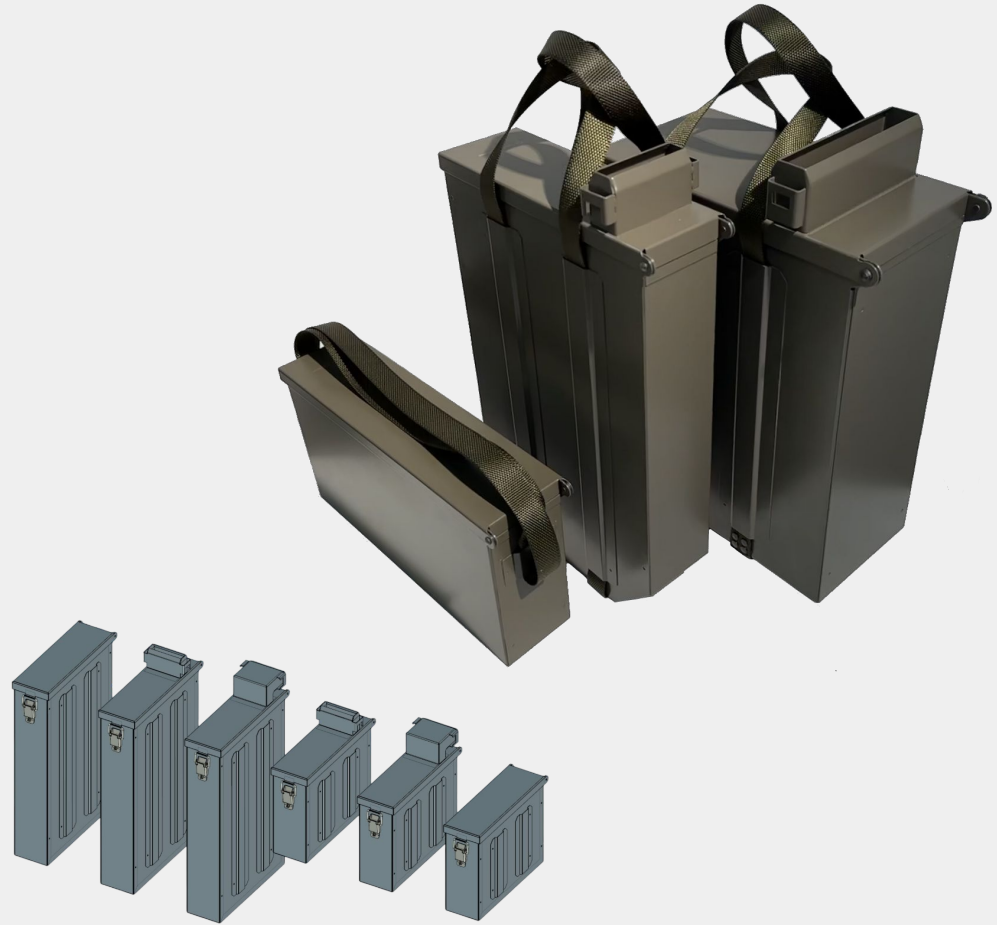
- Made from 2 mm hardened steel.

- Mounts directly on to the weapons without any modifications.



Ammunition Boxes

- For 5.56x45, 7.62x51 and 12.7x99 mm.
- Manufactured from light and thin anodize steel.
- With or without feed chute adapter.
- Capacity:
 - 5.56x45 mm - 400 rds / 800 rds
 - 7.62x51 mm - 250 rds / 500 rds
 - 12.7x99 mm - 200 rds



Special designed ammunition backpack for our system



High-quality backpack design specifically for our feed chute system.

Multiple tactical attachments and pockets.

Super ergonomic with thick padding all around.





Multicarrier

Designed to be able to carry a large variety of different ammo boxes, including two of our own ammo boxes, four of the M19A1 ammo box (7.62x51), two M2A1 (12.7x99) and two twin containers for the 84mm Carl Gustav ammunition.

Manufactured from light and strong aluminium weigh only 2.5 kg.





Complete package

- Feed chute adapter

- Feed chute

- Ammunition box 500 rds

- Backpack

- Feed chute cover

- Multicarrier



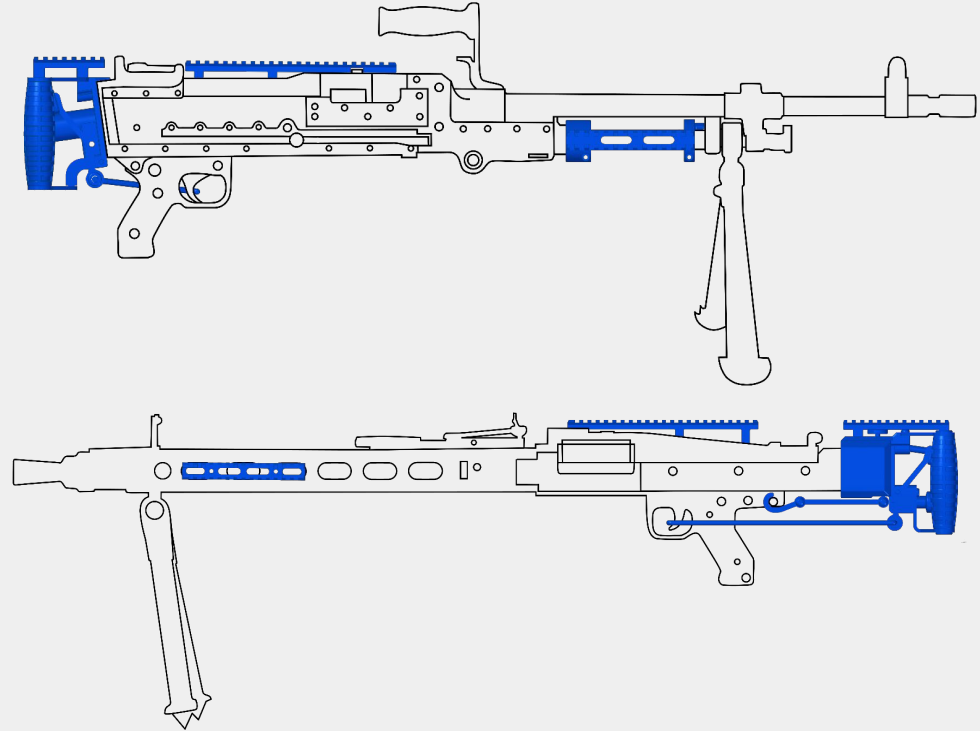
More of our offering



Upgrade Products for M240, MG3 and G3

Easy upgrades to modernize older platforms.

- | Spade Grips
- | Nato rails
- | Blank firing adapters
- | Universal feed tray
- | Speedloaders



Linker and Delinker systems

- For M27 (5.56x45), M13 (7.62x51), M9 (12.7x99), 338 NM (8.6x63mm), PKM (7.62x54R) and NSV (12.7x108).
- Reuse your links and reload link belts fast and easy.
- Save ammo cost by relinking your used links.
- Delink and reload your ammo belt in new order, tracer, dim tracer, etc.
- More time for shooting exercises.



Contact

info@swedishordnance.com

www.swedishordnance.com

